

PAM Curriculum

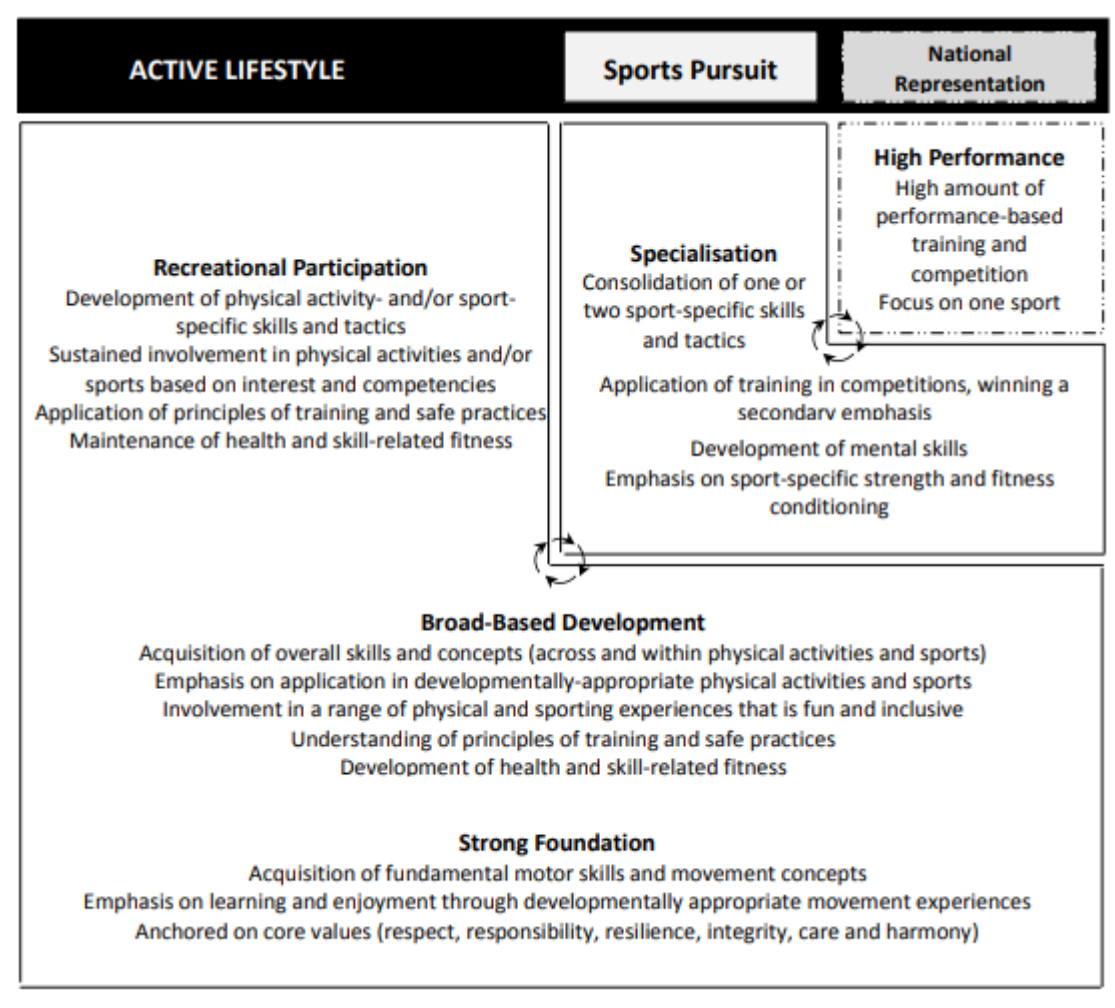
Physical Education
Art
Music



Physical Education & Dance and Fitness (Learn for Life Programme)



Physical Education



Strong Foundation

Acquisition of **fundamental motor skills** and **movement concepts**

Emphasis on **learning and enjoyment** through developmentally appropriate movement experiences

Anchored on **core values** (respect, responsibility, resilience, integrity, care and harmony)



Recreational Participation



Development
of physical
activity- and/or
sport-specific
skills and tactics



**Sustained
involvement** in
physical activities
and/or sports based
on interest and
competencies



Application of
principles of
training and
safe practices



Maintenance of
health and skill-
related fitness



Learning Areas for Primary 3 and Primary 4



Primary 3	Primary 4
Swimming	Athletics
Dance	Dance
Games and Sports	Games and Sports
Gymnastics	Gymnastics
Outdoor Education	Outdoor Education
Physical Health and Safety	Physical Health and Safety



Programmes beyond PE lessons

- Sports Education Programme
- Sports Carnival
- Dance and Fitness (LLP)



Assessment



Our Approach

- integrated into teaching and learning
- continuous process and done throughout the unit
- use of performance rubrics

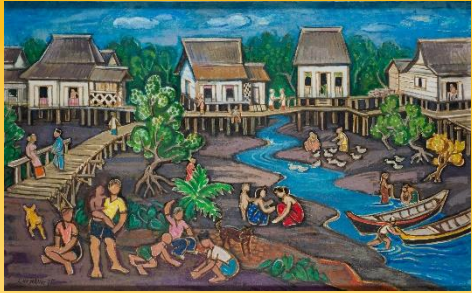
Overview of assessment areas

- Students will be assessed in the learning areas based on the Learning Outcomes of the PE syllabus
(e.g. Games and Sports: Students are assessed on ability to strike using underhand movement with an implement over a badminton net.)



Aesthetics Curriculum

Art and Music Exposure



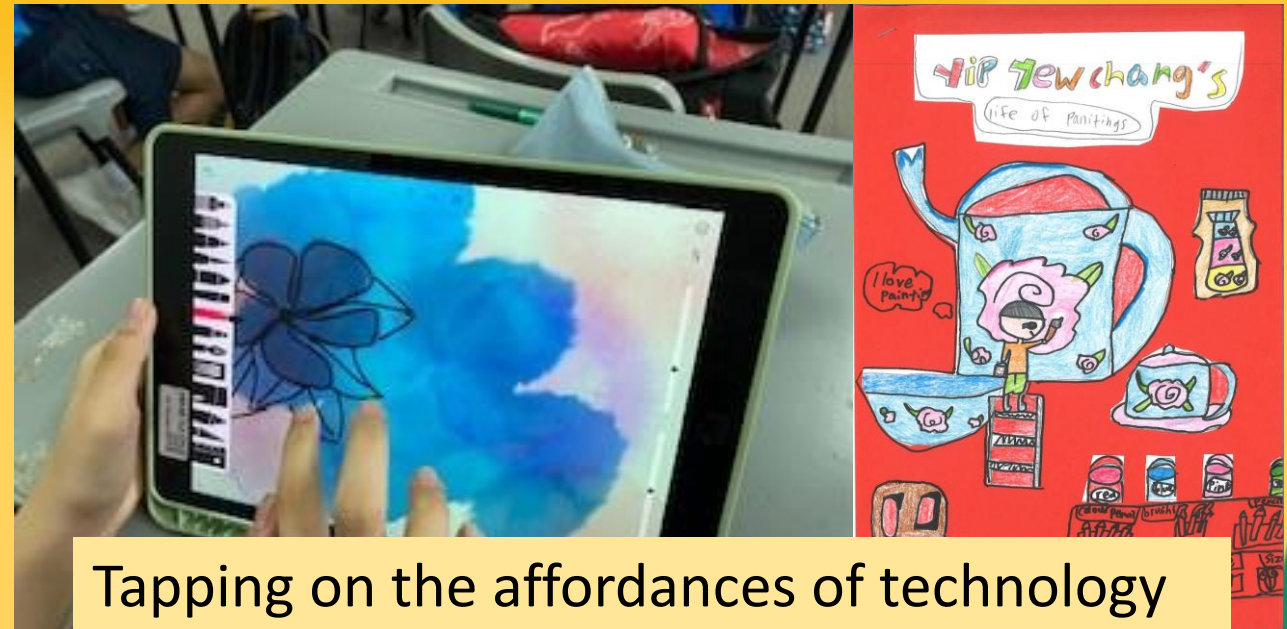
Learning Domains

ART	MUSIC
See (Observe – Inquire)	Appreciate
Express (Create – Innovate)	Create
Appreciate (Connect – Respond)	Perform



Art and Music Curriculum in P3 and P4

- Art
 - Exploring elements of art through technology and different mediums
- Music
 - Keyboard and Recorder lessons through music from Singapore and other cultures



Tapping on the affordances of technology



Assessment

- Art Portfolio Assessment
 - A collection of student's artworks and process works over time.
 - Identify evidence of learning to support and report learning
- Music Assessment
 - Performance task (e.g. singing and/or playing an instrument in a solo/ensemble context)

