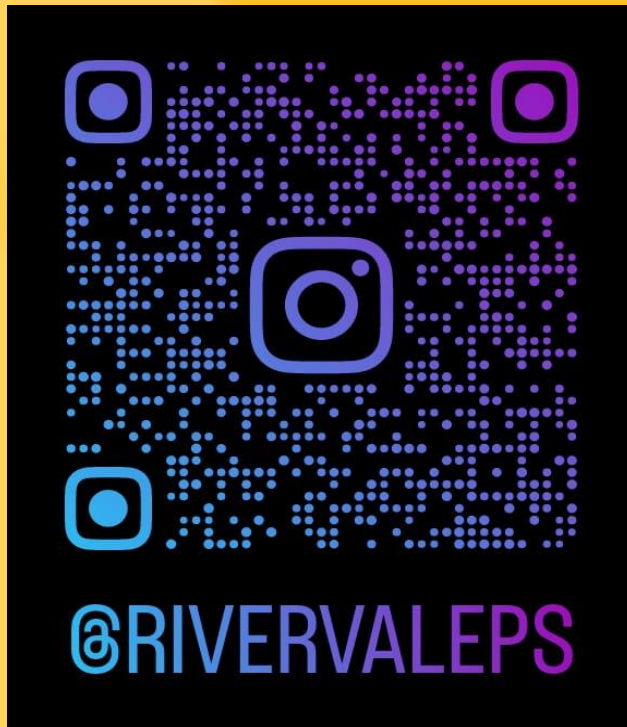


Primary 6 Parent Engagement Session

10 February 2023

Follow us on Instagram!



We will be starting the session shortly.

We seek your cooperation on the following:



No videography
No photography



All slides will be made available on the school website at a later time.

Rivervale Primary

立伟

Succeed & Excel



P6 Parent Engagement Session

Video Conference Meeting Etiquette

1. Please turn on your video
2. Use earpiece for better audio clarity
3. Mute your microphone to minimize background noise for other participants.
4. Q&A session will be opened to the floor only after the presentation.
5. During the Q&A session, please type your questions using the chat function.





Objectives:

- To communicate school direction and partner parents in the holistic development of Riverlites
- To provide a platform for parents to dialogue and connect with Form Teachers



PROGRAMME

1. Principal's Address

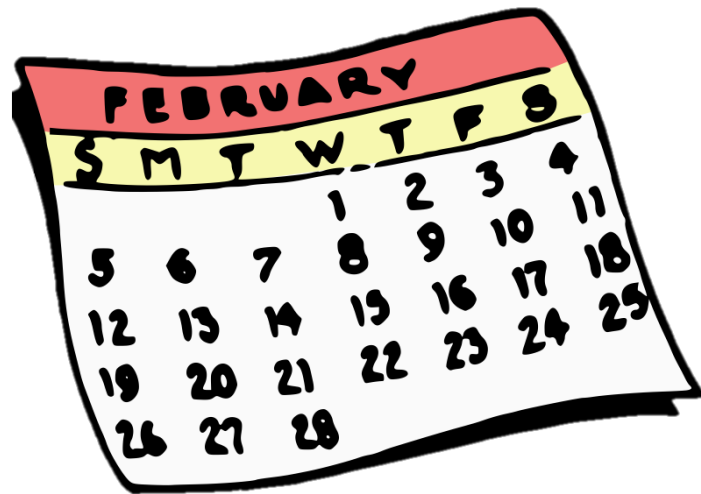
2. Sharing by YH/AYH:

- **Highlights of 2023**
- **PSLE and Sec 1 Posting Must-Knows**
 - Achievement Level (AL) Banding
 - Subject Based Banding (SBB) in Secondary School
 - Direct School Admission (DSA)
- **Student Well-Being**
 - Student Survey and Managing Stress
 - Growth Mindset
 - For Parents By Parents: Sharing by PSG



3. Interaction with Form Teachers (breakout room)

Highlights of 2023



Highlights of 2023

	Primary 6
Term 1	<ul style="list-style-type: none">• Colour Theory Workshop (PM – 9, 10, 12 Jan)• Learning Journey to Science Centre• Term 1 Weighted Assessments (12 – 26 Feb)
Term 2	<ul style="list-style-type: none">• DSA Application (Apr)• Learning Journey: Watch a play (PM - 4th/ 6th Apr)• Student-Led Conference (12th Apr)• Term 2 Weighted Assessments (30 Apr – 14 May)
Term 3	<ul style="list-style-type: none">• P6 Motivational Workshop (full day 26th Jun) -• CCA stand-down• P6 Prelim Oral and Listening Comprehension (Jul/Aug)• PSLE Oral (15th – 16th Aug)• P6 Prelim (21 – 25 Aug)
Term 4	<ul style="list-style-type: none">• PSLE (28th, 29th Sep, 2nd, 3rd, 4th Oct)• Post PSLE Programme



• P6 Supplementary Lessons 22nd – 23rd Jun and 7th – 8th Sep

POST PSLE PROGRAMME



Sports and Games



Dance and Movement (LLP)



Art



Coding (ALP) and
Digital Music Creation



PSLE

& Secondary School Postings Must-Knows



Changes to the PSLE scoring and Sec1 posting

https://www.youtube.com/watch?v=XNhLvEk_B90



OVERVIEW

RECAP

- How the PSLE Scoring System Works
- How the S1 Posting System Works

SUPPORTING STUDENTS AND THEIR PARENTS IN MAKING INFORMED SCHOOL CHOICES

- Understanding the PSLE Score Ranges
- School Choice Journey

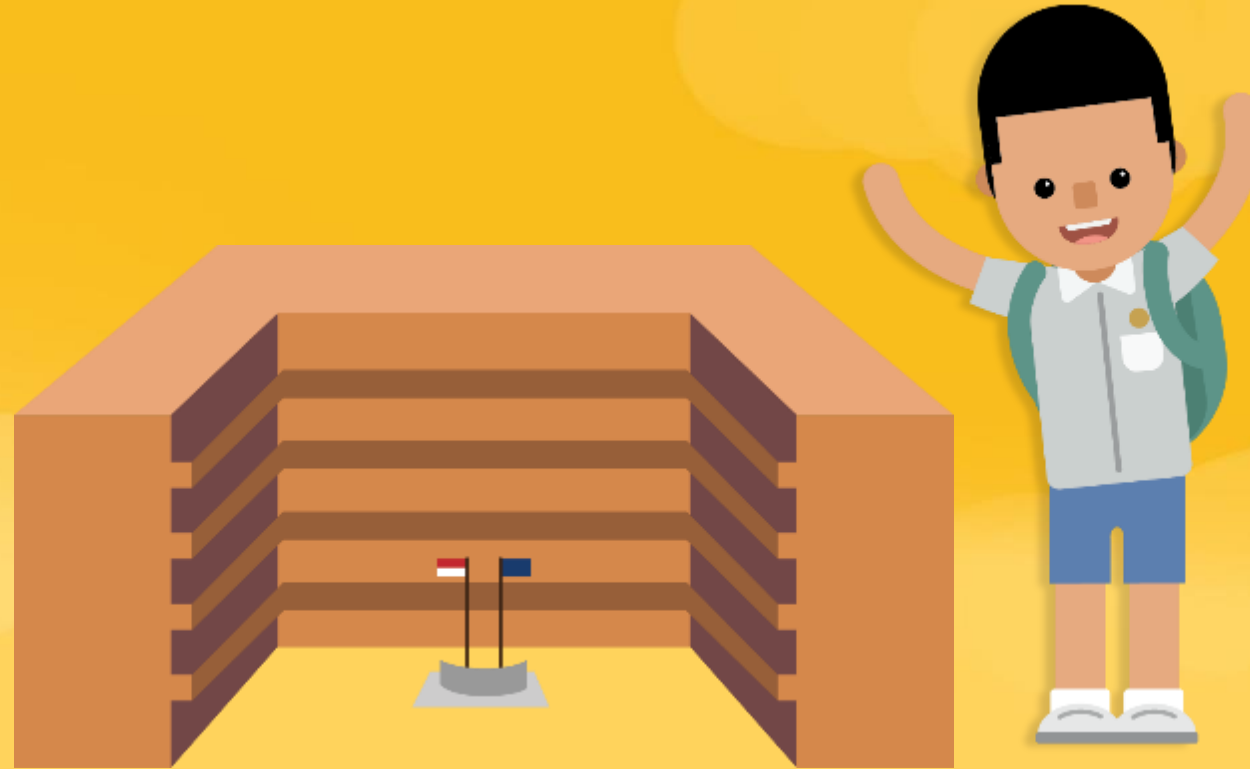


FROM T-SCORE TO SCORING BANDS

STANDARD		FOUNDATION	
AL	RAW MARK RANGE	BAND	RAW MARK RANGE
1	≥ 90		
2	85 – 89		
3	80 – 84		
4	75 – 79		
5	65 – 74		
6	45 – 64	A	75 – 100
7	20 – 44	B	30 – 74
8	< 20	C	< 30



HOW THE S1 POSTING SYSTEM WORKS



CHOICE ORDER Of schools matters more

- Students continue to have six choices in selecting their secondary schools.
- Similar to past years, students continue to be posted to a secondary school based on academic merit, i.e., PSLE Score, and their school choice order.
- If there are two or more students with the same PSLE Score vying for the last remaining place(s) in a school, the following tie-breakers will be used in the following order:
 1. CITIZENSHIP
 2. CHOICE ORDER OF SCHOOLS (New tie-breaker from 2021 onwards)
 3. COMPUTERISED BALLOTING



Tie-breakers

in the new S1 Posting System

Tie-breakers are used only if there are two or more students with the same PSLE Score vying for the last available place(s) in a school.

Here's a simplified example.

5 students are vying for the last places in the schools of their choice.

➤ Students with better scores will be posted first


➤ Tie-breaker #1: Citizenship

➤ Tie-breaker #2: Choice order of schools

➤ Tie-breaker #3: Computerised balloting

Jane
Singapore Citizen
16 pts


SCHOOL CHOICES:
1) Sch A
2) Sch ...
3) Sch ...
4) Sch ...



Jane has a better PSLE score. She will be posted first, to **School A**.

Bryan
Singapore Citizen
20 pts

SCHOOL CHOICES:
1) Sch B
2) Sch ...
3) Sch ...
4) Sch ...




Bryan, Mary, Alan and Rina have the same score.

As Jane has taken the last available place in School A, Bryan, Mary, Alan and Rina will vie for the last available place in their next choice, **School B**.

Mary
Singapore Citizen
20 pts

SCHOOL CHOICES:
1) Sch A
2) Sch B
3) Sch C
4) Sch ...




Bryan and Mary are Singapore Citizens. They will have priority to enter **School B**.

Because Bryan ranked School B higher than Mary, he will be posted to **School B**.

Since Bryan has taken the last place in School B, Mary will be posted to **School C**.

Alan
Permanent Resident
20 pts

SCHOOL CHOICES:
1) Sch A
2) Sch B
3) Sch D
4) Sch ...




Alan and Rina will be tie-broken out as they are Permanent Residents. They will be considered for their next choice, **School D**.

Alan and Rina have both ranked School D as their third choice. They will go through computerised balloting to vie for the last remaining place in **School D**.

Through computerised balloting, Alan is posted to **School D**.

Rina
Permanent Resident
20 pts

SCHOOL CHOICES:
1) Sch A
2) Sch B
3) Sch D
4) Sch E



Since Alan has taken the last place in School D, Rina will be posted to her fourth choice, **School E**.

PSLE SCORE RANGES FOR INDIVIDUAL SECONDARY SCHOOLS




PSLE SCORE RANGES FOR INDIVIDUAL SECONDARY SCHOOLS

The PSLE Score range refers to the PSLE Score of the first and last student admitted to a particular school in the previous year via the S1 Posting Exercise. This shows the range of student profiles who enter each school.

Example

XX Secondary School
PSLE Score range of 2021



PSLE Score of the first student posted into the school in the respective courses

PSLE Score of the last student posted into the school in the respective courses [i.e., the school's Cut-Off Point (COP)]

USE OF HIGHER CHINESE LANGUAGE (HCL) FOR ADMISSION INTO SPECIAL ASSISTANCE PLAN (SAP) SCHOOLS



HCL POSTING ADVANTAGE FOR ENTRY TO SAP SCHOOLS WILL CONTINUE

Students who obtained a Distinction/Merit/Pass for HCL at the PSLE and an overall PSLE Score of 14 or better will receive a posting advantage when applying to SAP schools.

Students will be considered for admission to SAP schools in the following order:



7

NO HCL

Students with better PSLE Scores will be posted first, even if they did not take HCL



8

DISTINCTION



8

MERIT



8

PASS

Amongst students with the same PSLE Score, those with better HCL grades will be posted first



8

NO HCL



9

DISTINCTION

- Students' HCL results are denoted as 'D' (Distinction), 'M' (Merit) or 'P' (Pass).
- Students who obtain (i) a Distinction / Merit / Pass in HCL and (ii) a PSLE Score of 14 or better are eligible for posting advantage to SAP schools.
- Students are ranked taking into account their performance in HCL.
- This posting advantage applies before the tie-breakers for S1 Posting.

My child is entering secondary school soon!



Ministry of Education
SINGAPORE



Full Subject-Based Banding (Full SBB) will be rolled out in secondary schools by 2024.

Find out what your child could look forward to.

NEW!!!



What is Full Subject-Based Banding?

- Full Subject-Based Banding (Full SBB) is part of MOE's ongoing efforts to cater to the different strengths and interests of our students.
- Under Full SBB, there will **no longer be separate Express, N(A), and N(T) courses.**



What is Full Subject-Based Banding?

- Subjects offered in secondary school will be known as **G1, G2, G3** (G stands for General), mapped from today's N(T), N(A) and Express standards respectively.
- Students can take different subjects at G1, G2 and G3 based on their strengths, interests and learning needs.
- Under Full SBB, the GCE O- and N-Level will be replaced with the new Singapore-Cambridge Secondary Education Certificate (SEC) examinations.



What is Full Subject-Based Banding?

- Students will continue to be posted into secondary schools through three scoring bands, as students' PSLE Scores remain a good initial gauge of their overall academic ability and their appropriate subject levels at the beginning of Secondary One.
- More details will be shared at a later date.
- For more information on Full SBB, please visit:

<https://www.moe.gov.sg/microsites/psle-fsbb/full-subject-based-banding/main.html>



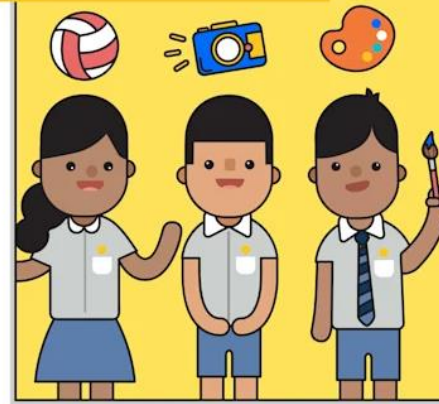
Direct School Admission (DSA)



Overview of DSA

- Direct School Admission for secondary schools (DSA-Sec) allows students to **gain direct entry** to certain secondary schools **based on their talent** in sports, CCAs and specific academic areas.

The school's programmes, subjects and CCAs that interest them



Location and transport options

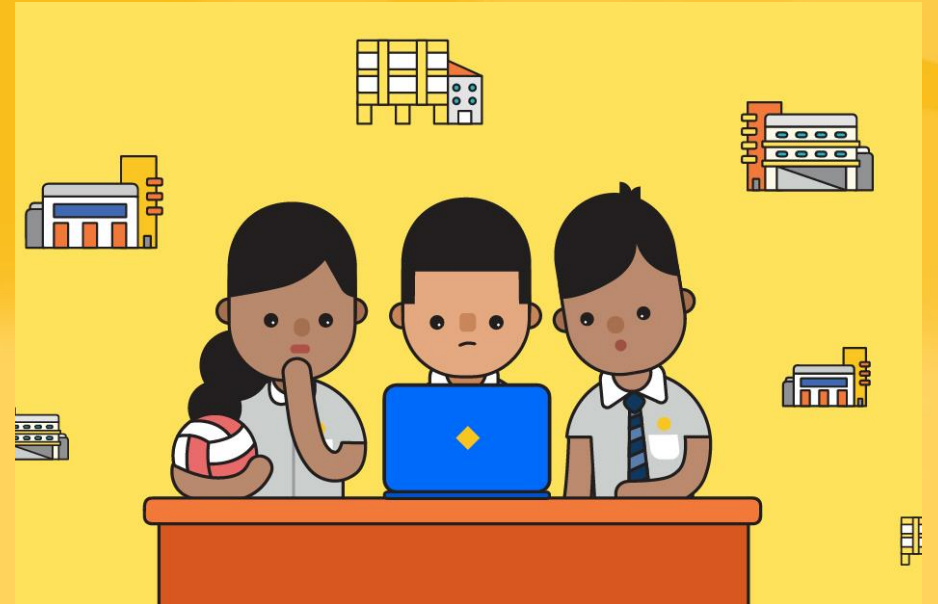


School culture



Eligibility

- Primary 6 students can apply for DSA-Sec based on a **wide-range of talents**, including:
 - Sports and games
 - Visual, literary and performing arts
 - Debate and public speaking
 - Science, mathematics and engineering
 - Languages and humanities
 - Uniformed groups
 - Leadership (for example, prefects)



DSA Timeline

Apr

- Explore the list of schools that offer DSA and their programmes

May -
Jun

- Apply for the preferred schools through the DSA-Sec portal

Jul -
Aug

- Shortlisted students to attend interviews, auditions or trials

Mid
Sep

- Selected students will receive offers from the schools directly

End
Oct

- Selected students to submit their school preferences through the DSA-Sec Portal

End
Nov

- Admission will only be confirmed when the PSLE results are released

Parent's Support



“No school can work well for children if parents and teachers do not act in partnership on behalf of the children’s best interests.”

~ Dorothy H Cohen



Interaction with Form Teachers



Interaction with Form Teachers

- Join the respective breakout rooms according to your child's class.
- Your child's Form Teachers will be in the rooms to interact with you.
- You may leave the meeting at the end your interaction with the Form Teachers

6RESPECT	Mrs Liew Bee Lin
	Mdm Nanthini
6RESPONSIBILITY	Ms Sakina
	Mdm Nicole Tan
6RESILIENCE	Mr Riduan
	Mdm Hartini
6INTEGRITY	Mdm Vicki Wan
	Mr Firduas
6CARE	Mdm Norashidah
	Miss Tan Yi Han
6HARMONY	Mrs Tan Li Min
	Mdm Ivy Choi





Thank You!



FOR YOUR SUPPORT

